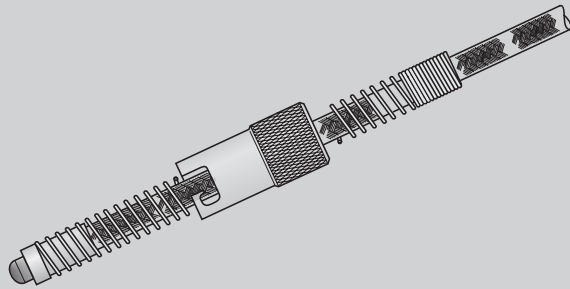




# Special-Thermocouples

## Thermocouple type L (DIN)



**For plastic processing machinery**

**Features various mountings**

**Different cable lengths**

**Mounting accessories**

### TECHNICAL DATA

#### SPECIAL THERMOCOUPLE A

##### THERMO-PAIR

Fe-CuNi type L to DIN. Hot junction insulated against heat losses to the outside.

##### Response time

In steel  
Well hole 8,2 mm Ø, depth 20 mm,  $t_{90}$ : 40 s

##### Insertion depth

Adjustable

##### Fixing

Spring-loaded bayonet type

##### Materials

Bayonet: chrome plated brass  
Spring: stainless steel SS 301  
Threaded fitting: galvanized steel

##### Connecting lead

Glass-silk insulated compensating cable, stranded  $0,5 \text{ mm}^2$  wire, twisted and sheathed with glass-silk. Armoured with galvanized steel mesh.

##### Mounting

Well hole: 8,2 mm Ø, 120 ° blind end  
Depth: recommended > 15 mm  
see fig. 1, 4 ff

#### PENCIL-TYPE THERMOCOUPLE D

##### THERMO-PAIR

Fe-CuNi type L to DIN.

##### Insertion depth

32 mm

##### Connecting lead

Glass-silk insulated compensating cable, stranded  $0,5 \text{ mm}^2$  wire, twisted and sheathed with glass-silk. Armoured with galvanized steel mesh.

##### Mounting

Well hole: 4,2 mm Ø, 120 ° blind end  
see fig. 2

#### MINIATURE-TYPE THERMOCOUPLE

##### THERMO-PAIR

Fe-CuNi type L to DIN.

##### Thread

M 8 x 1 mm

##### Connecting lead

Glass-silk insulated compensating cable, stranded  $0,5 \text{ mm}^2$  wire, twisted and sheathed with glass-silk. Armoured with galvanized steel mesh.

##### Mounting

Well hole: 6,2 mm Ø, tapered M 8 x 1  
120 ° blind end  
see fig. 3

fig. 1 Special-type thermocouple A

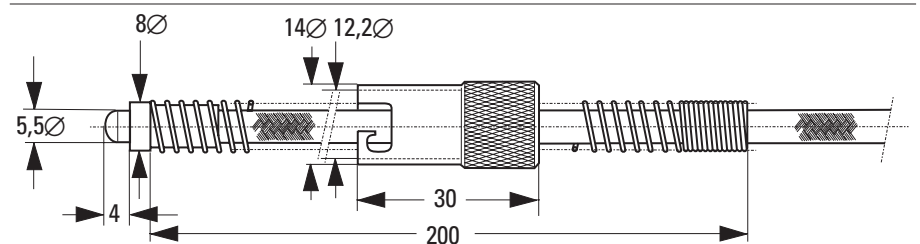


fig. 2 Pencil-type thermocouple D

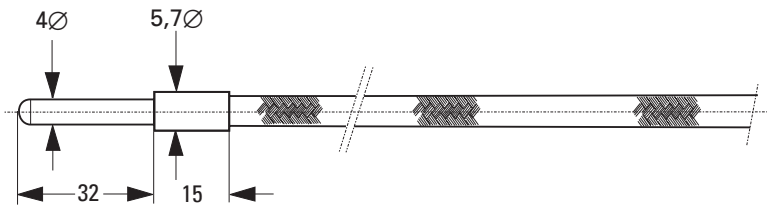


fig. 3 Miniature-type thermocouple

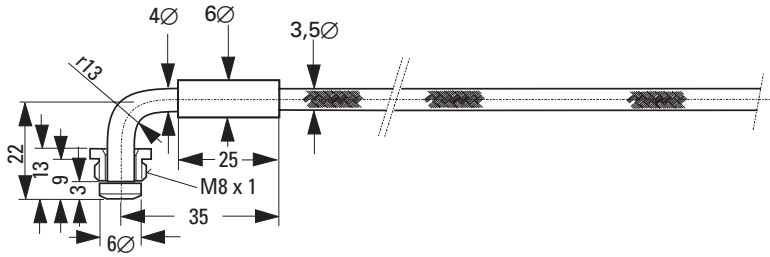


fig. 4 threaded fitting 85mm

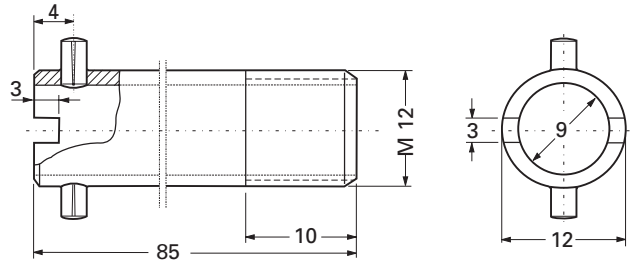


fig. 5 threaded fitting 30 mm

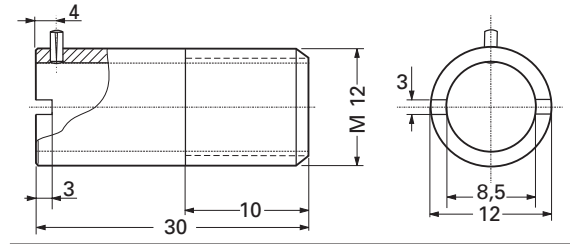


fig. 6 threaded fitting 25 mm

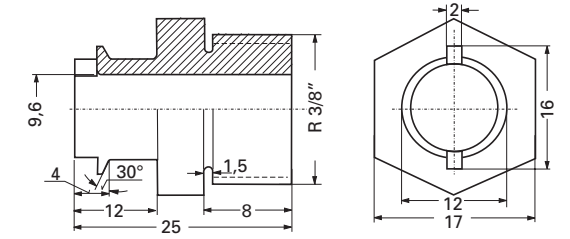
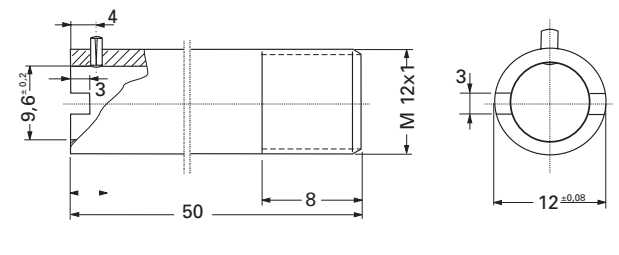


fig. 7 threaded fitting 50 mm



Element	Length connecting-cable	Max. temp. Hot junction	Max. temp. cable	Weight	Fig.-no.:	Order-number
Special-A	1,5 m	400 °C	180 °C for Short terms up to 250 °C	0,1 kg	1	9404-115-06461
	3,0 m			0,15 kg	1	9404-115-06301
	4,5 m			0,2 kg	1	9404-115-06451
Pencil-D	1,5 m			0,05 kg	2	9404-118-01461
	3,0 m			0,1 kg	2	9404-118-01301
Miniature-	1,5 m			0,05 kg	2	9404-117-41461
	3,0 m	0,1 kg	3	9404-117-41301		

**ACCESSORY threaded fitting for special-type thermocouple A**

Thread	length [mm]	Fig.-no.:	Order-number
M12	30	5	4012-142-30121
M12	85	4	4012-142-50751
R 3/8	25	6	4012-142-30851
M12 x 1	50	7	4012-142-41181



**Deutschland**

PMA Prozeß- und Maschinen-Automation GmbH  
Miramstrasse 87, D-34123 Kassel

Tel./Fax: (0561) 505 - 1307/-1710  
E-mail: mailbox@pma-online.de  
Internet: http://www.pma-online.de

**Your local distributor**